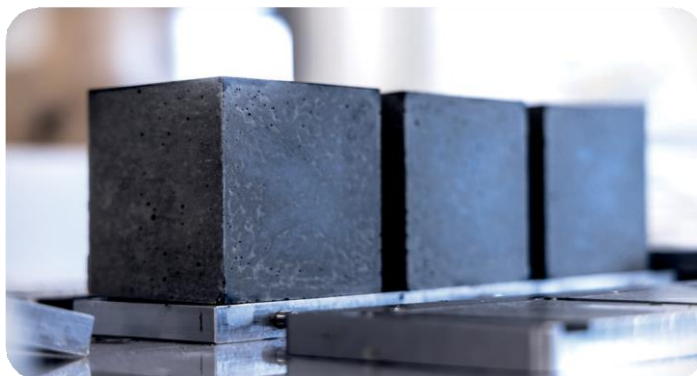
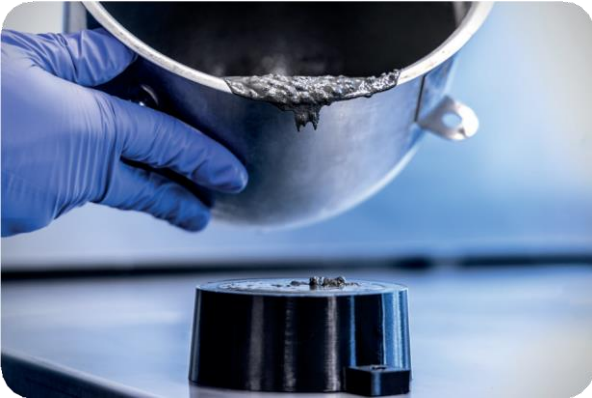


Y-MatTec®G900



High strength grout for offshore connections





APPLICATIONS

Y-MatTec®G900 is pneumatically transferred high strength shrinkage compensated grout material with high flowability designed for used in offshore grouted connections.

CHARACTERISTICS

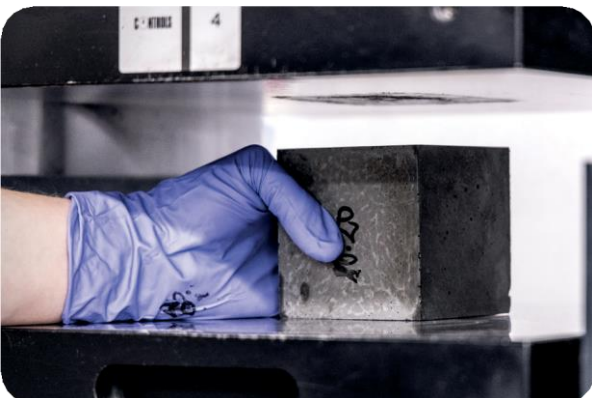
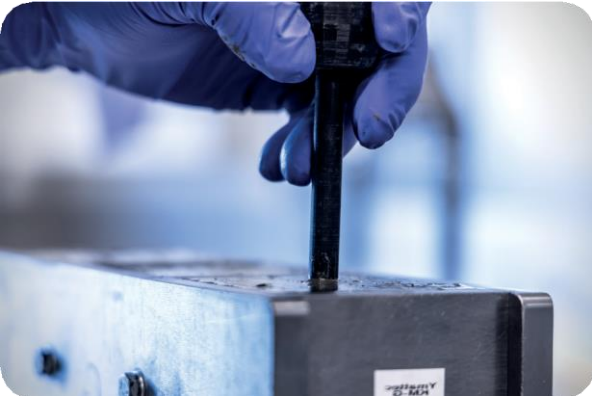
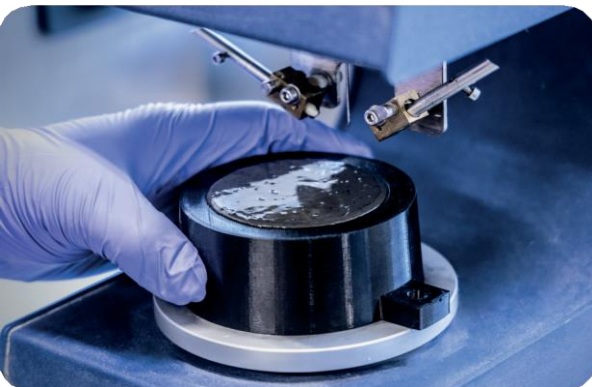
Y-MatTec®G900 can be transferred pneumatically, which allows optimizing the installation time and in consequence the cost of the grouting operation. The material has extremely good flow properties that makes it possible to grout narrow constrictions with very low water cement ratio at very low and high temperatures, obtaining at the same time high early strength within 24 hours.

Application thickness from 10 mm to 600 mm.

Y-MatTec®G900 is to be mixed with 14.0% to 15.0% potable water at 20°C (based powder mass) in a jet mixer (continuous mixer) or a paddle mixer. The water dosage depends on ambient temperature - higher temperature increases the water demand. The product can be mixed and used within ambient temperature from 2°C to 35°. At any temperature, it is recommended to make a flow test before the application, to set the correct water dosage.

The surface to be grouted must be clean, free from dirt, oil grease or other contamination. Concrete surfaces to be grouted have as well to be water saturated and with no free-standing water just prior to grouting.

As Y-MatTec®G900 is a special grout material application must be done by trained and qualified personnel.



QUALITY MANAGEMENT SYSTEM

Development, production, and sales are covered by Y-MatTec's quality management system certified in accordance with ISO 9001;2015 by DNV. The system indicates quality supervisors, routines for in-house inspection and documented routines.

Y-MatTec is hereto certified according to the Environmental Management System ISO 14001;2015 and Occupational Health and Safety Management System ISO 45001;2018 by DNV.



PACKAGING AND DISTRIBUTION

Y-MatTec[®]G900 is manufactured at Y-MatTec's facilities in Holstebro, Denmark with the use of Y-MatTec's automatic production facilities and can be supplied in 1500 kg FIBC bags for eventual loading into silos.

The yield is approximately 500 liters per ton of material.

Quality control is done at Y-MatTec's internal laboratory.

Y-MatTec[®]G900 has a shelf life of 12 months, if stored in a sheltered and dry place in its original packaging away from direct sunlight and heat, not exceeding 40°C. When stored in silo shelf life is reduced to 6 months. Stored under high temperature and high humidity conditions, the shelf life may be reduced.

HEALTH RISKS

Y-MatTec[®]G900 is a cement-based product and should be stored out of reach of children.

It is dangerous if consumed.

If Y-MatTec[®]G900 gets into the eyes, it can lead to serious eye injuries.

Mixed Y-MatTec[®]G900 forms calcium hydroxide which is an irritant to the skin.

For further info we refer to the MSDS.

Technical Data

Pot life (h)	>2 hours				
Setting time (min) EN 196-3	Initial: 6 - 8 hours		Final: 8 - 10 hours		
Flow (mm) ASTM C1437 / EN 1015-3	310 - 340				
Air content (%) EN 1015-7	<3				
Compressive strength classification	C90				
	1 day	3 days	7 days	28 days	56 days
Compressive strength 75x75 mm cubes, 20 °C (MPa) EN 12390-3	>45	>75	>85	>100	>110
Compressive strength, Characteristic (MPa)**	90				
Density (g/cm ³) EN 12390-7	2.20 - 2.30				
Static Modulus of Elasticity, (GPa) EN 12390-13	>35				
Flexural Strength (MPa) EN 196-1 (Prisms 40 x 40 x 160 mm)	>12				
Shrinkage classification*	SKVM 0				
Drying shrinkage (mm/m) EN 12617-4	<0.5				
Autogenous shrinkage (mm/m) Until 56 days ASTM 1698	<0.4				
Exposure Classes* EN 206-1, EN 1045-2	XC4, XD3, XS3, XF3, XA2, WF				

*Classification according to "DAfStb-Richtlinie - Herstellung und Verwendung von zementgebundenem Vergussbeton und Vergussmörtel, Ausgabe Juli 2019".

All data are given for conditions of 21 +/- 2°C and 60 +/- 10% RH.

The technical data provided do not represent guaranteed minimum values. ** Fcck based on 150/300 cylinders

Note:

Similar to all other recommendations and technical information, the information given in this TDS serves only as a description of the products characteristics, area of use and application is expected to be done by trained and professional personal. The data and information given are based on the best technical knowledge in the area of cement and concrete technology. The given data and consumption are obtained in a controlled laboratory environment and may be subject to variations due to different work conditions. Actual consumption and dosage should be determined on the job based of prior tests at the worksite. Our Technical Service Team is at your disposal for further recommendations. Y-MatTec reserves the right to modify the composition of the products provided these continue to comply with the data given. For liabilities of products sold we refer to our General Sales and Delivery Terms. Y-MatTec® - Registered trademark of Y-MatTec.