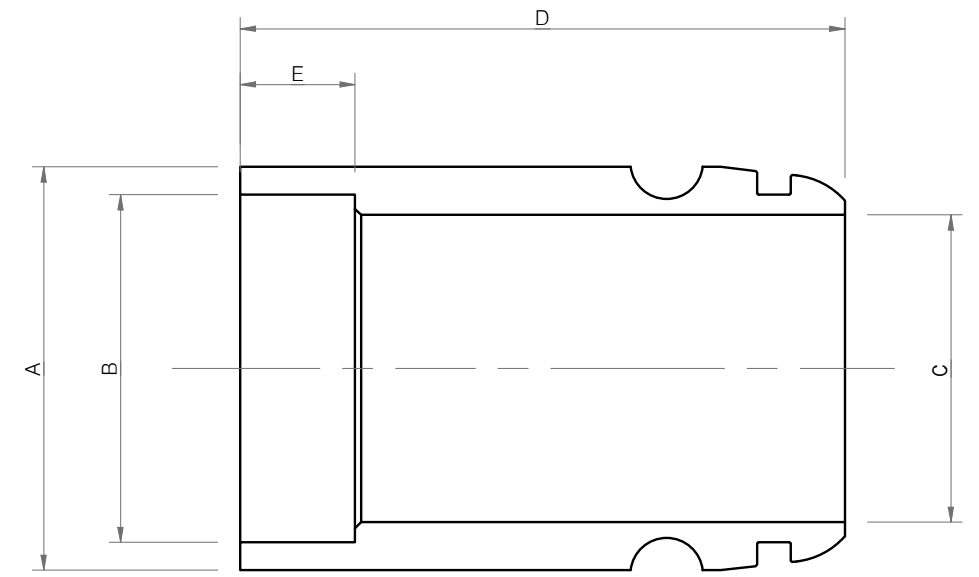
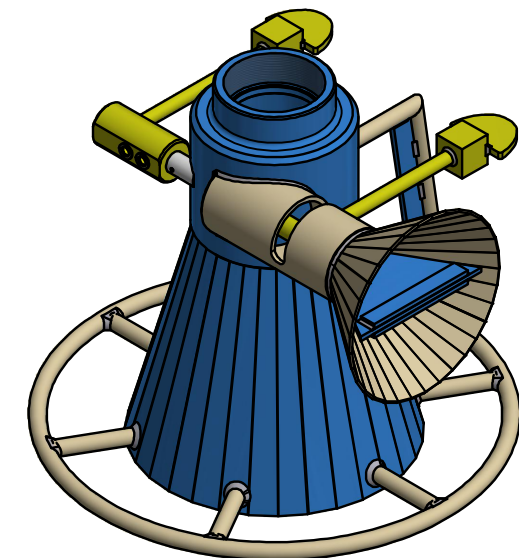
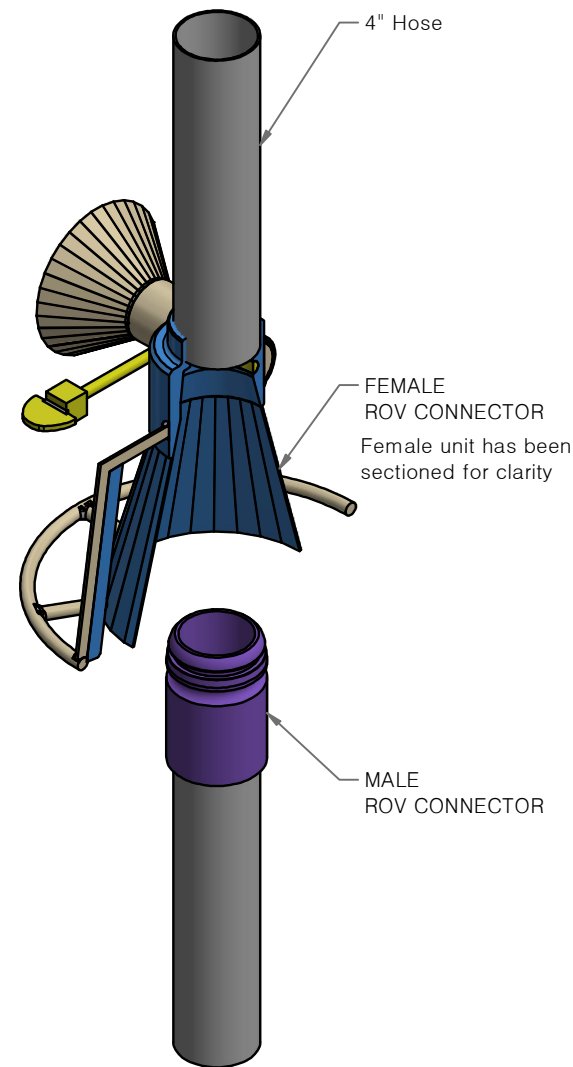
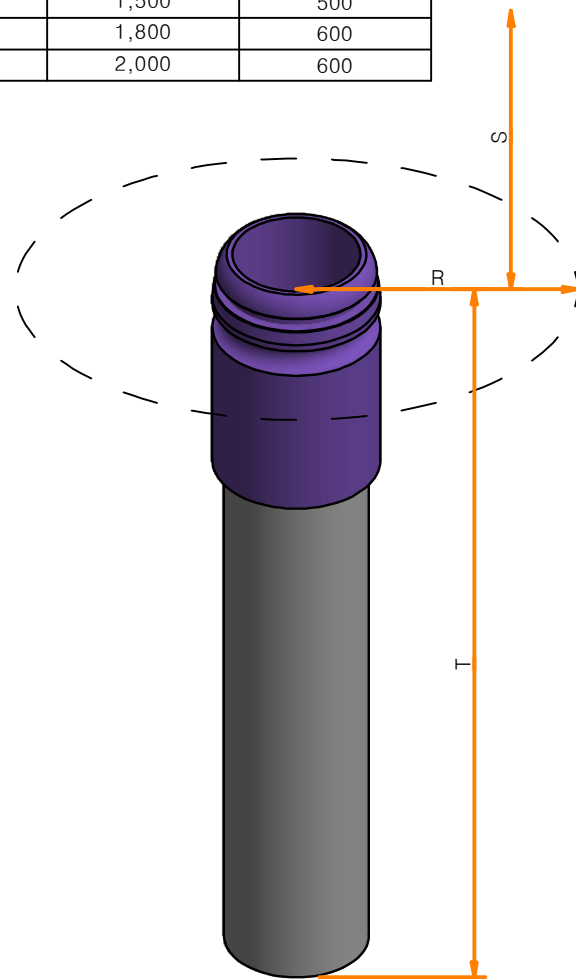


Male Connector Type/Size	Manufacturing Drawing No.	ØA (mm)	ØB (mm) +0.5/-0	Thread B	ØC (mm)	Length D (mm)	Length E (mm)
2" Welded	3_FO_0001-21	76.2	60.5		50.8	155	32
2" Threaded	3_FO_0001-20	76.2		2" NPT	50.8	155	32
3" Welded	3_FO_0003-21	101.6	90		76	155	34
3" Threaded	3_FO_0003-20	101.6		3" NPT	76	155	34
4" Welded	3_FO_0002-20	133.35	115		101.6	155	38
4" Threaded	3_FO_0002-22	133.35		4" NPT	101.6	155	38



Not to scale

Physical clearances necessary for the free access by female connector			
Size	R Radial (mm)	S Above (mm)	T Below (mm)
2"	350	1,500	500
3"	400	1,800	600
4"	400	2,000	600



A	Released	05/02/2021	 Units 3 - 5 Telford Square Business Park Livingston EH54 5PQ	MACHINING TOLERANCE	FABRICATION TOLERANCE	mm METRIC DO NOT SCALE THIRD ANGLE PROJECTION 	MATERIAL	ASSEMBLY DESCRIPTION
	REV	DESCRIPTION		DATE	X. ±0.3 X.X ±0.2 X.XX ±0.1 X.XXX ±0.05 ANGULAR ±0.25°		0 TO 120 ±0.3 >120 TO 400 ±0.5 >400 TO 1000 ±0.8 >1000 ±1.2 ANGULAR ±0.5°	Mild Steel Zinc Plated gcameron