

Data Sheet: 10V Grout Mixer and Surge Tank

Description

This is a batch grout mixer consisting of a colloidal mixer, an agitation tank and a grout pump. Grout density is controlled by mixing fixed volumes of seawater and cement measured using a water meter and a timer controlled rotary feeder.

A cement surge tank is mounted on top of the mixer. It holds up to 800kg and feeds a set volume of cement using a timer equipped rotary feeder.

All of the equipment is mounted in an offshore lifting frame and is fitted with a certified sling set.



Assembled 10V Grout Mixer

Grouting Capability:

- Grout output approximately 6m³/hr
- Density up to 1.98 S.G.
- Pumping pressure up to 24 bar
- (dependent on material used)

Typical Dimensions:

- Mixer 4000 x 2250 x 2300
- Surge tank 2250 x 1700 x 2300

Typical Weight:

- Mixer 6,000kg gross
- Surge tank 2,500kg gross

Power Requirements:

- 440 Volt at 60Hz 3-phase with earth
- 125 Amps (max on start-up)
- 100 Amps (max running)

Water Requirements:

- Taken from fire hydrant supply
- No minimum flow or pressure but a faster rate will allow faster mixing

Air Requirements:

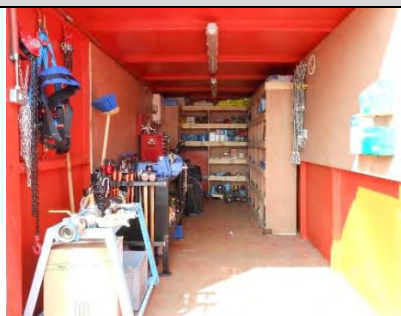
- Taken from common supply Nominally 8 bar (116 psi) with 2m³ per minute

Data Sheet: Workshop Container


Description

The workshop containers are based on standard 20 foot containers and are used as a general workshop.

Each container is fitted with a certified sling set.



<u>Dimensions:</u> <ul style="list-style-type: none"> 3000 x 2440 x 2600 for 10' Lab 6100 x 2440 x 2600 for 20' Lab/Workshop <u>Weight:</u> <ul style="list-style-type: none"> 6,800 kg max gross for Laboratory 6,000 kg max gross for Workshop 	<u>Requirements</u> Power: <ul style="list-style-type: none"> 380-460volt 50/60Hz, 3 phase and earth Approximately 18m (60 ft) mains power cable supplied
--	--

Data Sheet: Hose Storage Reel	
<u>Description</u> <p>Hose reel used for transporting and storing grout/air/water hoses normally of either 2inch or 1-1/2inch diameter, although other sizes are possible. Up to 800m of hose can be stored on the reel at one time.</p> <p>The reel is fitted with a pneumatic motor and gearbox which is connected to a radially mounted chain drive on the reel. This system allows the hose reel to pull hose on to the drum. It is mounted in an offshore lifting frame and is fitted with a certified sling set.</p> <p>The reel may be transported and/or stored in standard shipping containers.</p>	 <p><i>Hose storage reel prior to hose being attached.</i></p> <u>Typical Dimensions:</u> <ul style="list-style-type: none"> 2450 x 2220 x 2275 <u>Typical Weight:</u> <ul style="list-style-type: none"> 5,000 kg gross <u>Air Requirements:</u> <ul style="list-style-type: none"> Taken from common supply