

Data Sheet: Pan Mixer

This Pan Mixer consists of two orbital paddle pan mixers mounted in an offshore lifting frame and fitted with a full sling set; all approved to DNV 2.7-1 standards.

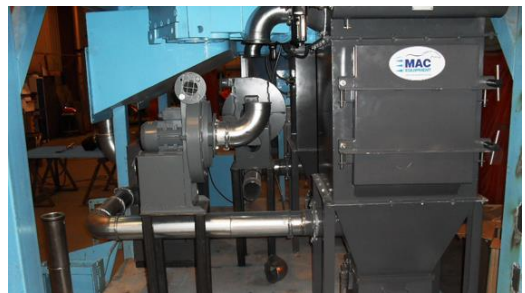
Both pans are on top of the mixer and can be run either simultaneously or independently. Each pan has a separate graduated water tank and the entire frame is fitted with detachable railings.

The top of each pan has a removable grating and a bag splitter which will allow bulk cement bags of up to 1,500kg to be used. Both pans feed to a common chute which funnels the grout to an appropriate pump at deck level.

This model features an active dust suppression & extraction system.



Orbital Pan Mixer



Dust suppression and extraction unit

<p>Grouting</p> <ul style="list-style-type: none"> Grout output up to 5m³/hr Density up to 2.45 S.G. <p>Typical Dimensions</p> <ul style="list-style-type: none"> 4000 x 2250 x 3210 <p>Typical Weight</p> <ul style="list-style-type: none"> 8,500 kg gross 	<p>Power Requirements</p> <ul style="list-style-type: none"> 440 Volt at 60Hz 3-phase with earth 125 Amps (max on start-up) 80 Amps (max running) <p>Water Requirements</p> <ul style="list-style-type: none"> Fresh water supply Minimum 1,500 litres per hour <p>Air Requirements</p> <ul style="list-style-type: none"> Taken from common supply Nominally 8 bar (116 psi) with 2m³ per minute
--	---

Data Sheet: High Strength Grout Pump


Description

Identical compact pumps, suitable for pumping high-strength grouts.

All of the equipment is mounted in a DNV2.7-1 approved offshore lifting frame; each pump comes complete with a dedicated lifting set.



2 nos. Grout Pumps in their offshore lifting frames.

<p>Grouting</p> <ul style="list-style-type: none"> • Grout output approximately 6m³/hr • Pumping pressure 30bar 	<p>Typical Dimensions:</p> <ul style="list-style-type: none"> • 4200 x 1510 x 1600 <p>Typical Weight:</p> <ul style="list-style-type: none"> • 1850 kg gross <p>Power Requirements:</p> <ul style="list-style-type: none"> • Diesel Powered
<p>Data Sheet: Workshop Container</p>	
<p>Description</p> <p>The workshop containers are based on standard 20 foot containers and are used as a general workshop.</p> <p>Each container is fitted with a certified sling set.</p>	
<p>Dimensions:</p> <ul style="list-style-type: none"> • 6100 x 2440 x 2600 for 20' Workshop <p>Weight:</p> <ul style="list-style-type: none"> • 6,000 kg max gross for Workshop 	<p>Requirements</p> <p>Power:</p> <ul style="list-style-type: none"> • 380-460volt 50/60Hz, 3 phase and earth • Approximately 18m (60 ft) mains power cable supplied